



**BCD**

**Evolving India, Since 1952**

# OVERVIEW

Being one of the oldest names in the Indian construction and design industry, the company's roots date back to 1937. With over Seven decades of experience in designing and executing projects, our company is in a commanding position to economically and efficiently design and build projects of all types and magnitudes. Be it complete Townships, High Rise Buildings, Steel Plants, Hotels, Power Plants, Cement Plants, Runways, Oil Refineries, Airports, Stadiums, Public Health and Environmental Projects, Stadiums, Mega Infrastructure Projects; we have delivered it all.

Our Chairman, S. Amrik Singh Bhandari is credited for being involved in construction of some of the most prestigious projects in India including the Supreme Court of India, High Court New Delhi, Steel plants in Bhilai, Rourkela, Vishakhapatnam, Durgapur & Bokaro, Udyog Bhavan, Egyptian Embassy, Malaysian High Commission, Central Board of Revenue Building, Bank of Baroda, Oberoi Hotel – New Delhi, Qutab hotel in New Delhi, Bhilai Hotel, Power Plants, and a turnkey Project of Township in Najaf, Iraq to name a few.

We possess the requisite expertise and credibility which enables us to keep projects ahead of schedule by virtue of modern construction technologies along with abundant manpower available at our command, a fact we are proud of. With specialized experience in the Construction Industry for more than 70 years, we have carved a niche for ourselves in the industry as one of the leading Civil Contractors of the country.

This has also led the company to come forth as one of the exceptional names in the Indian real estate industry. Today, we are present across many cities in India and involved in the development of diverse segments including group housings, commercial complexes, malls, hotels, and hospitals. We have created land banks in Tier 2 cities which are being developed into integrated townships with international standards and facilities.

W : [www.bcdindia.com](http://www.bcdindia.com)

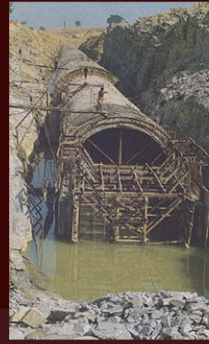




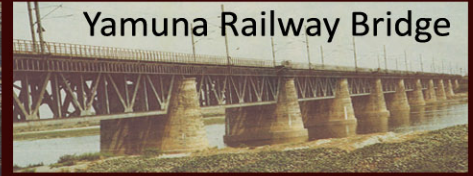
# FEW OF OUR PAST PROJECTS



High Court, New Delhi



TUNNELS



Yamuna Railway Bridge



Bokaro Steel Plant

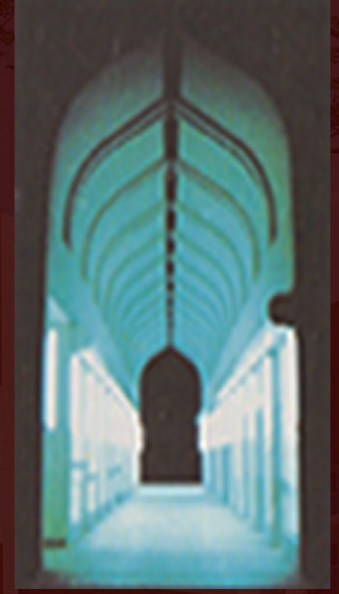
ROADS & BRIDGES

STEEL PLANTS

HOTELS



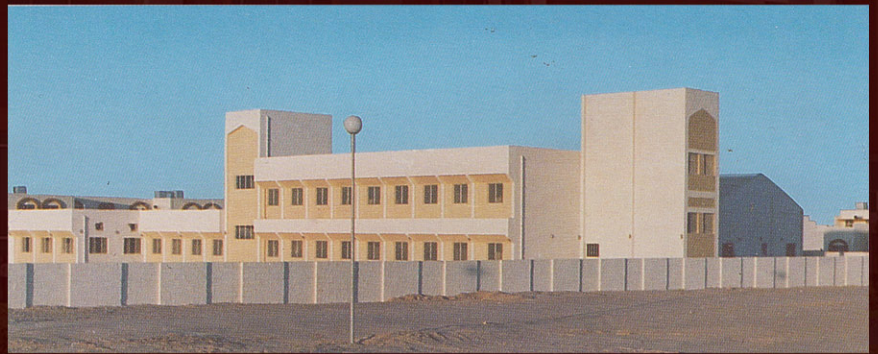
Oberoi Hotel, New Delhi



TURNKEY PROJECT, IRAQ



Bhilai Hotel



PRIMARY SCHOOL

HIGH RISE BUILDINGS



WATER & SEWERAGE





# FEW OF OUR PAST PROJECTS



USIS LIBRARY BUILDING AT NEW DELHI



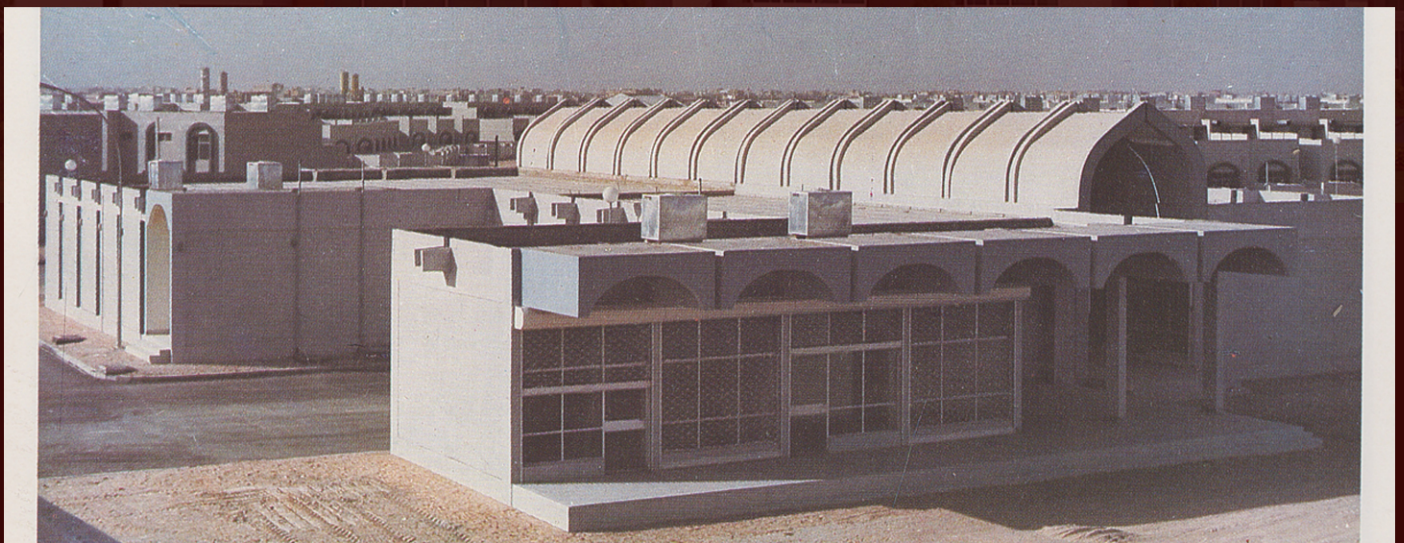
TRUNKEY PROJECT



CENTRAL BOARD OF REVENUE BUILDING AT NEW DELHI



QUTAB HOTEL, NEW DELHI



SUPER MARKET AT NAJAF HOUSING PROJECT





## Commercial Buildings

1. Supreme Court of India.
2. High Court Building, New Delhi.
3. Bhandari House, Nehru Place, New Delhi.
4. Egyptian Embassy, New Delhi.
5. USIS Library Building at Curzon Road, New Delhi.
6. USIS Residential House, New Delhi.
7. US Aid Residential Complex at Mehruli, New Delhi.
8. The Malaysian High Commission Building, New Delhi.
9. Vandana" Multi-storeyed Office Complex, New Delhi.
10. Bank of Baroda, New Delhi.
11. US Aid Administrative Building & Warehouse, New Delhi.
12. Philippines Embassy, New Delhi.
13. Udyog Bhawan, New Delhi.
14. Central Board of Revenue Building, New Delhi.
15. Construction of 10 storied Commercial complex at Vaishali in Ghaziabad District (UP).
16. International Arrival Hall including Custom Block at Palam Airport, New Delhi.
17. Sagar Commercial Complex at 6 Tilak Marg, New Delhi.

## Hotels

1. Design & Construction of Oberoi Hotel , New Delhi.
2. Interior Finishes for 5 Star Lalit Hotel , Bangalore.
3. Bhilai Hotel, Bhilai. 250 Rooms Hotel for Bhilai Steelworks.
4. Qutab Hotel, New Delhi

## Housing Projects

1. Construction of Residential Complex "Century Celeste", Bangalore
2. Construction of Residential Buildings "Skylark Enclave "at Jagdish Nagar, Bangalore.
3. Construction of Residential Villas "Skylark Greens", Whitefield, Bangalore.
4. Construction of 526 SFS Houses for Delhi Development Authority.
5. Residential Buildings "Diamond District" at Airport Road in Bangalore.
6. Construction of 800 houses on turnkey basis. 800 Units, 102000 Sqm, Govt of Iraq.
7. Low and Middle Income Residential Colony, 320 Units, 17000Sqm for LIC, New Delhi.
8. Middle Income Residential Colony at Mehruli, New Delhi, 156 units, 16000Sqm.
9. Residential Quarters. 40 units, 3000 Sqm, Chanakya-puri, New Delhi.
10. Sagar Residential Apartments, New Delhi.

11. Residential Colony with club. 40 Units, 3000 Sqm, CPWD, New Delhi.
  12. Residential Colony construction at Kaka Nagar, New Delhi
  13. Residential Colony for Ordinance Factory. 306 Units, 20500 Sqm at Jabalpur for MES.
  14. Low cost Housing for Central Govt. Employees. (Area 40000 Sqm.), New Delhi.
  15. 160 Residential Colony for Ordinance Factory. 9500 Sqm at Ambarnath, Kalyan for MES.
  16. Units, 24000 Sqm & Training School, Hostel & Other construction, Ambarnath, Mumbai.
  17. Reconstruction of Ramgarh Camp for the Army , 100 Barracks,37000 Sqm.
  18. Residential Accommodation for Infantry Brigade Centre at Rawalpindi, 14000Sqm.
  19. Double storied Residential Accommodation for Senior Officers at Rawalpindi.
  20. Prisoners of war Camp,300 Barracks, 33500 Sqm at Rawalpindi.
  21. Construction on Division Army Camp done during World War II, 19000 Sqm at Sialkot.
  22. Repair and maintenance and term contract for Ordinance Factory, at Rawalpindi.
  23. Technical Accommodation for Armed Brigade done during World War II at Lalkurti.
- ### Industrial Works

## Industrial Works

1. Construction of five floors 350 mm thick RCC Flat Roof slab Chemical reprocessing factory approx 17000 Sqm for Hindustan platinum limited.
2. Civil and Structural Work of Tarpaulin Plant Factory, Taloja, New Mumbai.
3. Construction of paint shop and godowns at Rail Coach Factory, Kapurthala, Punjab.
4. Construction of Ancillary Building at Rail Coach Factory Kapurthala, Punjab.
5. "Production shop Building" and "Allied works", Ordinance Factory, Jabalpur.
6. "Factory of Good Year Tyre & Rubber Co, India Ltd", Ballabgarh.
7. Construction of "Pankota Bund" and "Lal Ghat Bund" at Varanasi.
8. Construction of Ordinance Factory / Machine Tool Factory, Ambarnath.
9. "Foundation and Development of Attock Oil Company", Rawalpindi.
10. RCC concrete Reservoir 6 Nos. at Tarki near Dist. Jhelum.
11. Construction of "Road at Chowk No. 6", Rawalpindi





## International experience in design & construction.

1. Involved in major Sewer Network Projects in Kingdom of Saudi Arabia.
2. Design & Construction of Township at LA-Vigie, Mauritius.
3. Design & Construction of Township at Al Najaf and High Rise apartments at Basra of Iraq.
4. Design & Laid asphalt road for 20KM at Najaf for and on behalf of the Govt. of Iraq.
5. Sewage Treatment Plant for the city of Al-Najaf for The Ministry of Housing, Govt. of Iraq.
6. Sewage Treatment Plant & laying of Sewer Net Work for Kathmandu, Nepal.
7. Sewerage System including Treatment Plant for the city of Riyadh, Saudi Arabia.

### Power Plant

1. 2x130 MW Thermal Power plant at Toranagallu (Karnataka).
2. 2x500 MW Super Thermal Power Plant at Talcher for NTPC Ltd.
3. Extension of 2x60 MW Thermal Power Plant for SAIL at Bhilai and Bokaro Steel Plants.
4. 2x200 MW Sarani Thermal Power Plant at Sarani (MP).

### Oil Refinery

1. Attock Oil Refinery at Rawalpindi, Pakistan.
2. Part of shell Refinery, Bombay.
3. Stanvac Refinery at Chembur, Bombay.

### Road and Bridges

1. Major and minor structures of NH-1 in the state of Haryana.
2. Major and minor structures of NH-1 in the state of Delhi.
3. River Bridge of 108 m length in Kon Kalamboli Section of Mumbai - Pune Expressway
4. Construction of Road Bridge in New Delhi with Four Lane Track.
5. Construction of Railway Bridge across Yamuna River.

### Steel Plant

1. Civil works of Basic Oxygen Furnace & other Works at Toranagallu, Bellary, Karnataka.
2. Civil Engg. Works for the Construction of Durgapur Steel Plant at Durgapur (W.B.)
3. Civil Engineering Works: Thermal Power Turbo Blower Station. Zone II at Bokaro Steel Plant
4. 3 Million Ton Cold Rolling Mill for Bokaro Steel Stage I.
5. Part of Hot Rolling Mill (Part) for RCC Large Foundation at Bokaro steel Plant.

6. Wagon Tippler, Coke oven, Track Hopper, Junction House, Galleries, etc, Bokaro Steel Plant.
7. Civil Engineering works for "Steel Melting shops" at Bokaro Steel Plant.
8. Civil Engineering works in Group - I and II in Visakhapatnam Steel Plant.
9. Blast Furnace, Steel Melting Shop, Sintering Plant & all Civil works for Rourkela Steel Plant.
10. Civil works in the Plate Mill & water treatment Plant area, Reheating Furnace Project & Pump House for the modernisation of Rourkela Steel Plant.
11. Large RCC Foundation for Foundry, Oxygen Plant, Tunnels, Open Hearth and Coke Oven Batteries along with R.C.C. Chimney, Bhilai steel Plant.
12. 400 Beds Hospital Complex with allied Building, Bhilai steel Plant.

### Water and Sewerage

1. Construction of Pre-Stressed Concrete Circular Conduit from Muradnagar to Hindon River pipeline Project at Muradnagar, Ghaziabad (UP) for Delhi Jai Board.
  2. Construction of 6.2 Km long D-shaped tunnels in Hazaribag district, Bihar.
  3. Sewage treatment Plant & laying of Sewer Net Work for Kathmandu, Nepal.
  4. Sewage treatment Plant for the city of Al-Najaf of the Ministry of Housing, Govt. of Iraq.
  5. The Biggest Hopper Based Settling Tank (Clarifiers) for Bombay Municipal Corporation.
  6. RCC Circular 10MLD Demineralisation Power Plant in Talcher, Orissa.
- ### Cement Plant & Sports Complex
1. 2 Million Cement Plant at SATNA (MP) during 1995 -97 for PRISM CEMENT LTD.

### Sports Complex

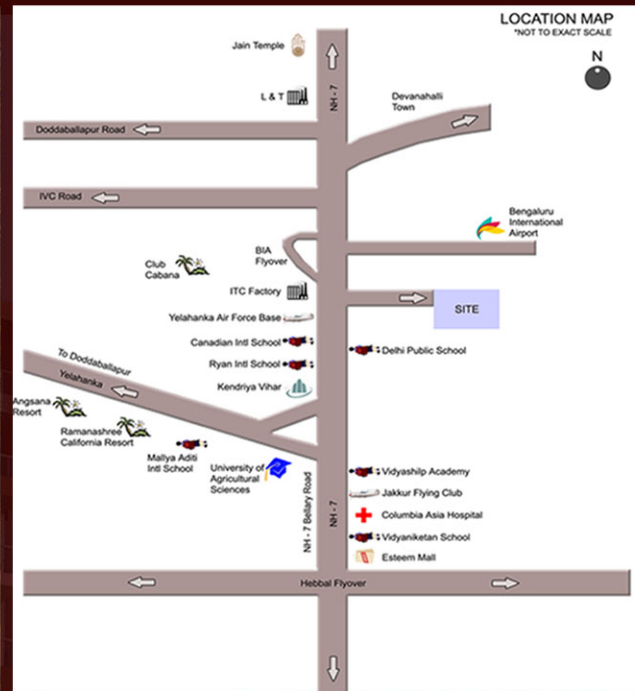
1. Construction of Indoor Stadium at Koramangala, Bangalore.
- ### Runways
1. Strengthen & Extension of existing Runway at Allahabad.
  2. 10,000 ft Runway at Chabua (Assam) for MES during 1966
  3. Air Port Building & Runway for Agra air Field in 1953-54.
  4. 10,000 ft Runway at Bagdogra (WB) for MES,
  5. 6000 ft Runway at Santacruz, Bombay for Civil Aviation Authority.
  6. "Chaklala Airport, Taxi Track & Hard standing" at Chaklala for MES.





# BCD HEAVEN VALLEY

## LOCATION MAP



### EXPERIENCE LUXURY AND AFFORDABILITY WITHIN CITY LIMITS

A short walking distance from Bangalore's New Airport Road, nestled in orchard land and azure sky, lies the canvas of a picture perfect life. A niche and secluded group housing, BCD Heaven Valley in North Bangalore is a place where the very definition of living is filtered with muslin-perfection to include only the most sublime pleasures.

Without the distractions of the city next-door, it's a place where heaven can be found in the company of the people you love living life with, in a home that is the very heart of your circle of life.

Designed for fine living with all the elements in perfect equilibrium, BCD Heaven Valley blends unique architectural aesthetics with sensible layouts and plans, and supplements it with full range of luxury lifestyle amenities. The Residential Development offers a wide array of sizes and room configurations to enable you to make a nuanced selection.

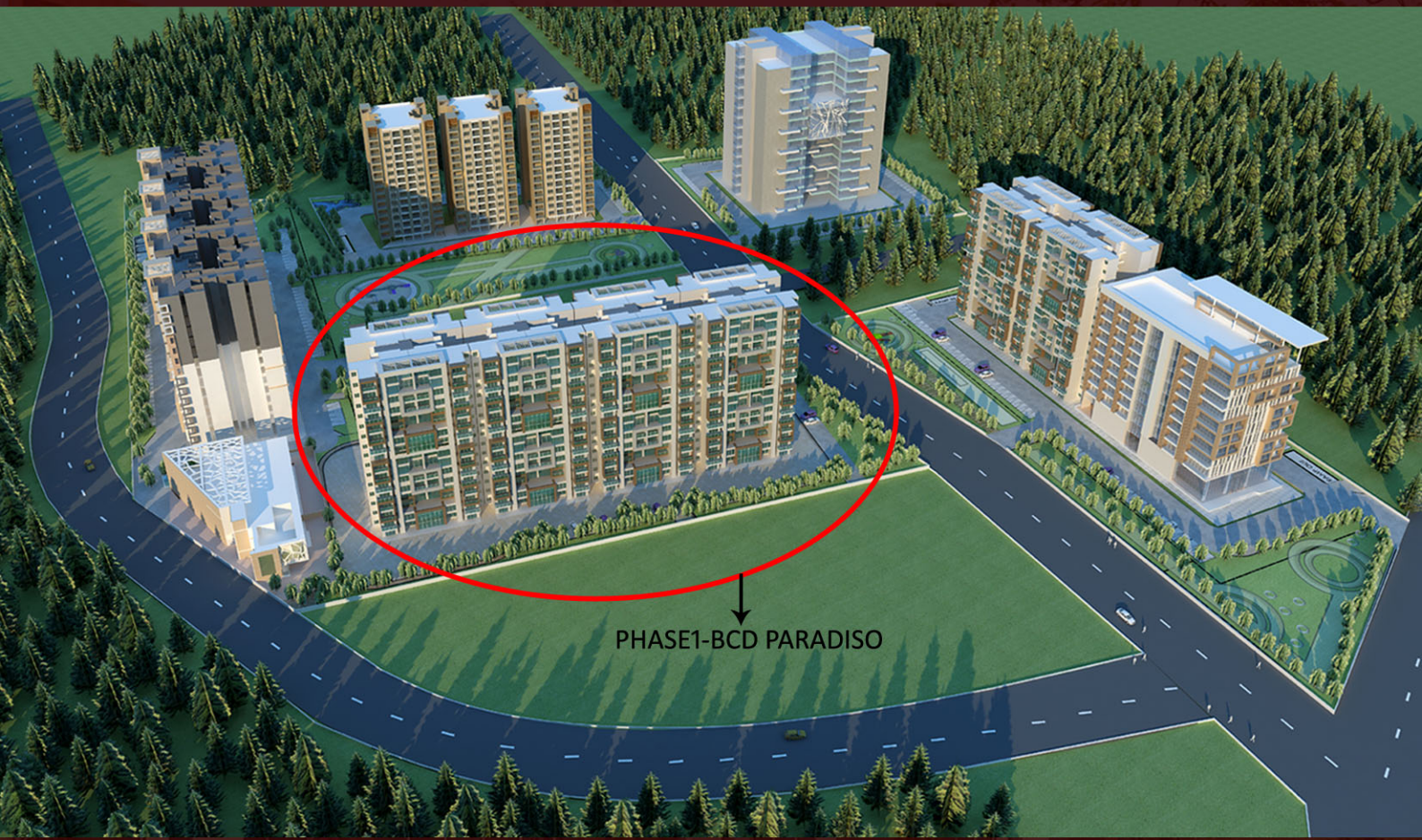
With a view of over 1000 acres of green zone and the convenience of having the finest International Schools, Hospitals, Shopping and Dining options a stone throw away, its ideal location offers a lifestyle that is too good to resist.

We hope to see you all there!





# BCD HEAVEN VALLEY





# AMENITIES

## FACILITIES

Swimming Pool/ Toddlers' Pool	Salon – Men and Women
Yoga and Meditation Area	Multi-purpose Hall
Children's Play Area and Sand Pit	Business Center
Snakes and Ladders	Laundromat
Senior Citizens' Area	ATM
Dry/ Rock/ Maze Garden	Pharmacy
Large Landscaped Areas	Amphitheatre
Office Space for Association	Climbing Wall
Yoga/ Meditation/ Aerobics	Palm Plaza
Departmental/ Convenience Store	Fountain Plaza

## SPORTS AMENITIES

Basketball Court  
 Tennis Courts  
 Cricket Pitches  
 Jogging Track  
 Bicycle Track  
 Putting Greens  
 Skate Park  
 Skating Rink  
 Health Club – Steam, Sauna & Jacuzzi  
 Indoor Badminton Courts  
 Squash Courts  
 Table Tennis  
 Pool/ Billiards  
 Gymnasium



**ARCHITECTURE:** Cohesive Urban Design | Climatically appropriate design | Natural and cross ventilated rooms | Insulated roof tops | Earthquake resistant design | Fire safety compliant



**GREEN FEATURES:** Water harvesting & water recycling | Green Infrastructure | Micro irrigation | Environmentally responsible construction



**FEATURES:** Large open spaces | Central avenue | Welcome fountain | Landscaped & manicured gardens | Shaded street & open spaces | Efficient outdoor lighting | Natural pond and stream | Open air theatre | Health care | Nursery school | Gazebo | Trellis | Business center | High speed elevators | Visitors car parking

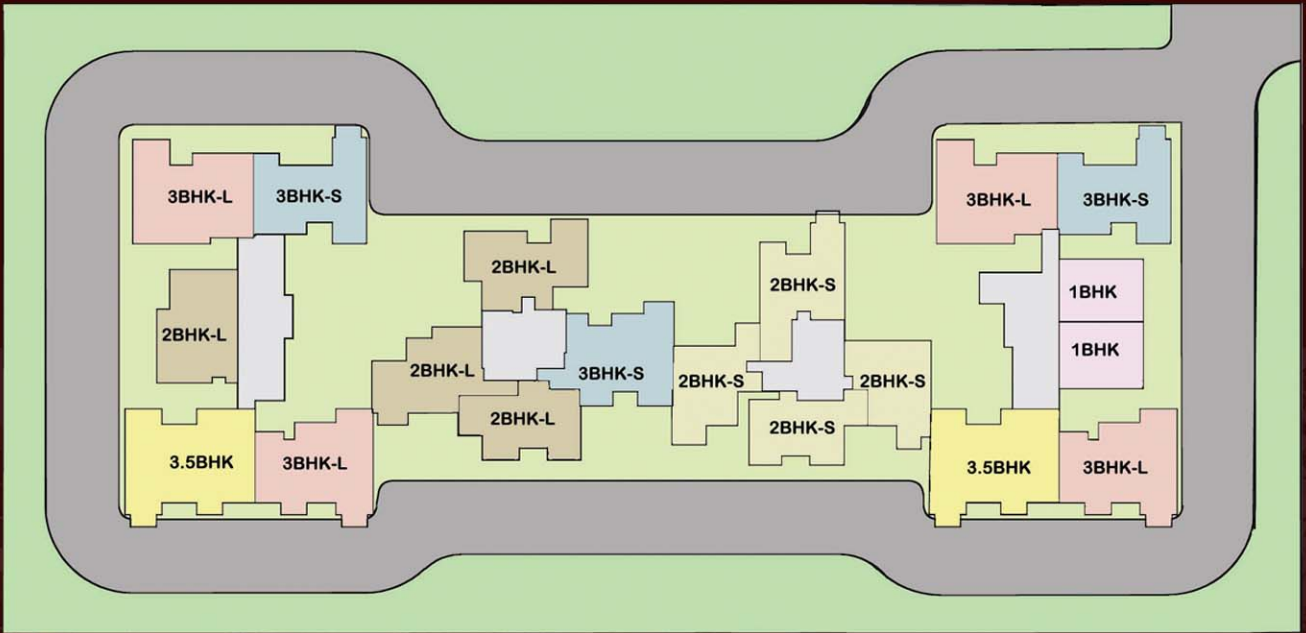
**CLUB HOUSE:** Well equipped health club | Convenience store | Lounge | Outdoor Games | Billiards Carrom / Indoor games | Children's play area | Swimming pool with separate kids section

**SECURITY:** Gated Community | CCTV Security cameras | 24X7 Gaurds

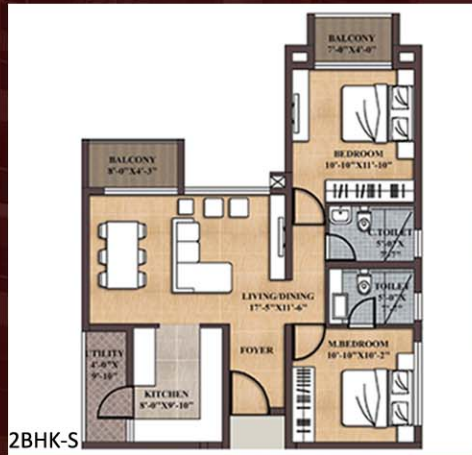




# UNIT PLANS



2BHK-L



2BHK-S



3BHK-S



3.5BHK



2BHK-L



3BHK-L

## UNIT SIZES

1 BHK	750 SQFT
2 BHK SMALL	1050 SQFT
2 BHK LARGE	1250 SQFT
3 BHK SMALL	1350 SQFT
3BHK LARGE	1550 SQFT
3.5 BHK	1750 SQFT







## CONTACT US

Delhi Office :  
Bhandari House, 91 Nehru place,  
New Delhi - 110019 (INDIA).

T. 080-25219464 / 41656764

T. +91 9663897969

E. [info@bcdindia.com](mailto:info@bcdindia.com)

[www.bcdindia.com](http://www.bcdindia.com)

## MARKETING PARTNER:

# CBRE

Mr Ajeet

T. +91 9620075860

E. [ajeet.giri@cbre.co.in](mailto:ajeet.giri@cbre.co.in)



Bangalore Office :

I-01 & I- 03, Diamond District, Airport Road,  
Kodihalli, Bangalore - 560 008 (INDIA).